

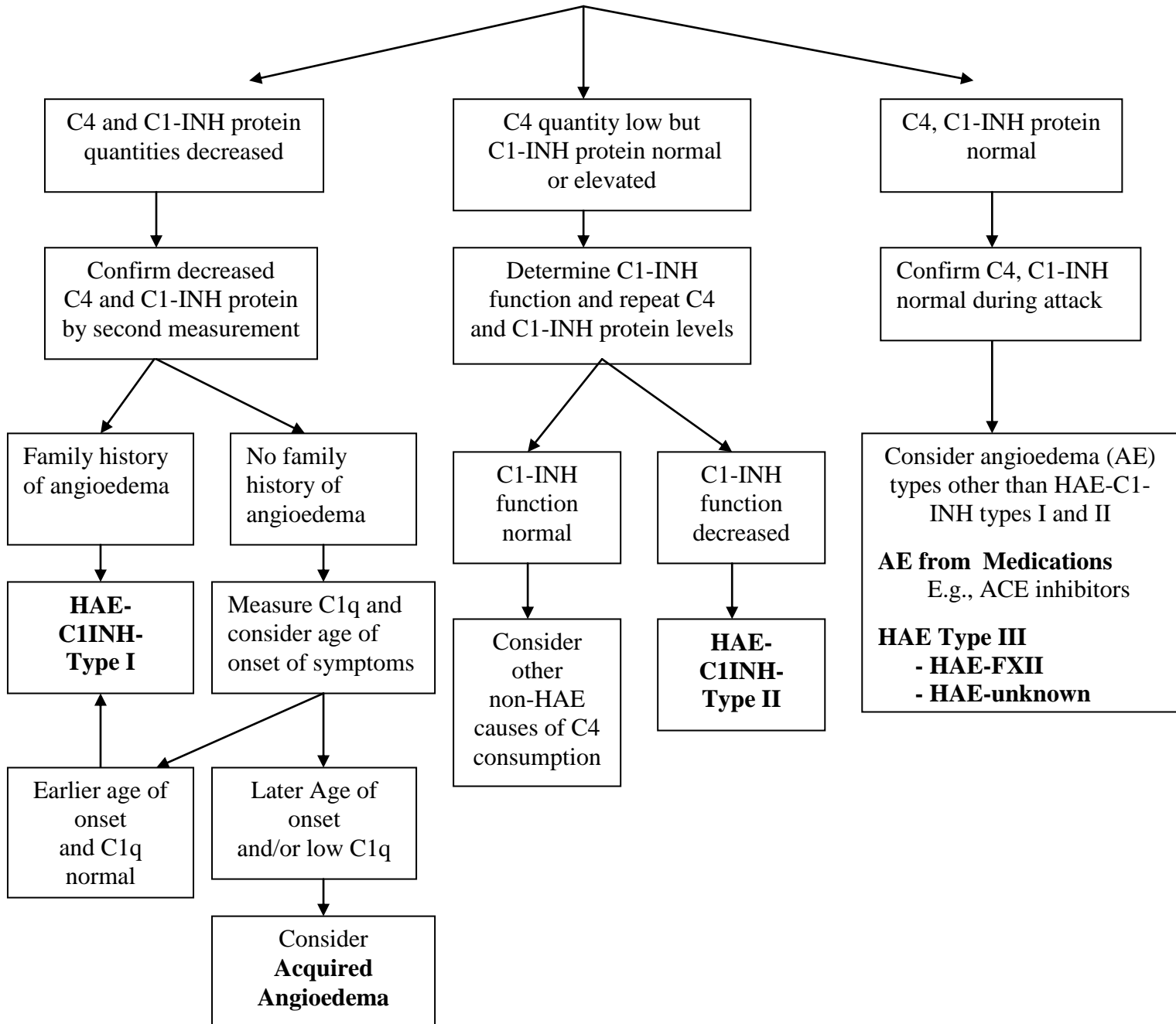
Hereditary Angioedema Diagnostic Algorithm



Consider Hereditary Angioedema (HAE):

- Recurrent angioedema (without urticaria)
- Recurrent episodes of abdominal pain and vomiting
- Laryngeal edema
- Positive family history of angioedema

Measure: serum complement factor 4 (C4),
C1 inhibitor (C1-INH) antigenic protein
C1 inhibitor (C1-INH) functional level if available



From: www.haecanada.com and Bowen *Allergy, Asthma & Clinical Immunology* 2011, 7:1 <http://www.aacijournal.com/content/7/1/1> and 2010 International Consensus Algorithm for the Diagnosis, Therapy and Management of Hereditary Angioedema - Bowen et al. *Allergy, Asthma & Clinical Immunology* 2010, 6:24 <http://www.aacijournal.com/content/6/1/24>