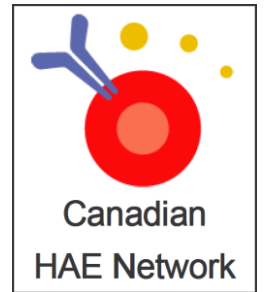


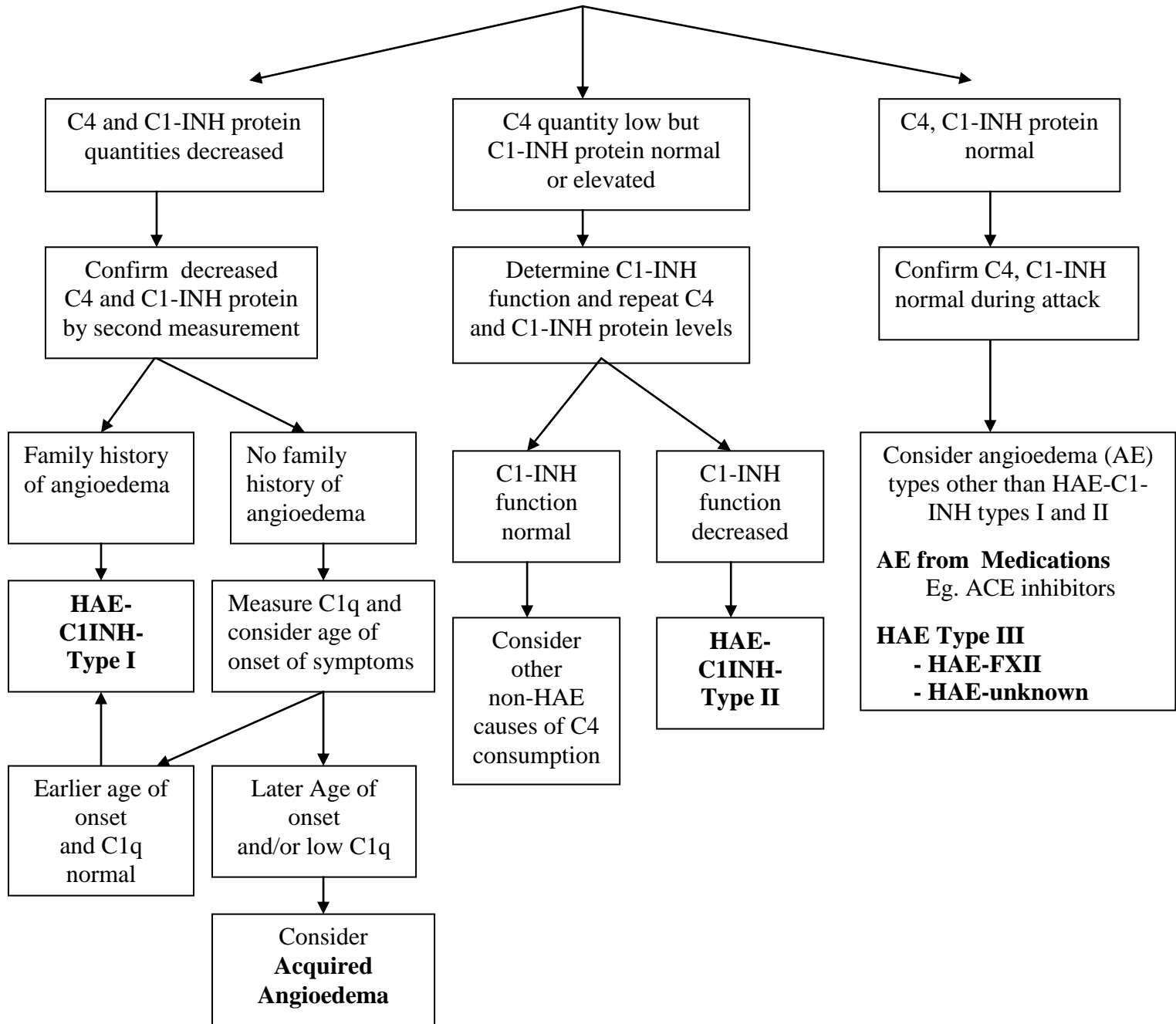
Hereditary Angioedema Diagnostic Algorithm



Consider Hereditary Angioedema (HAE):

- Recurrent angioedema (without urticaria)
- Recurrent episodes of abdominal pain and vomiting
- Laryngeal edema
- Positive family history of angioedema

Measure: serum complement factor 4 (C4),
C1 inhibitor (C1-INH) antigenic protein
C1 inhibitor (C1-INH) functional level if available



Modified from: www.haecanada.com ; *Immunology and Allergy Clinics of North America*,
submitted 2010; *Ann Allergy Asthma Immunol* 2008;100(Suppl 2):S30-S40; *J Allergy Clin Immunol*
2004;114:629-37